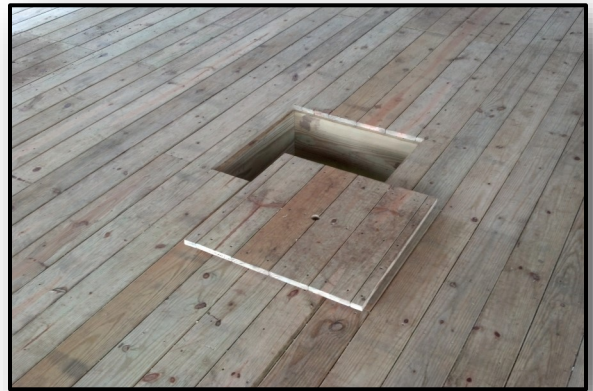


THE CAGE

Purpose: To provide a venue structure where more than one specialized game option is available.

Set-up: The building is designed to be able to play both in the floor (foxhole foosball) and on the floor (human foosball). The holes were created by boxing in the floor joists in the location that the foosball players would be. The covers were then made by laying the flooring over the joists, crewing a piece of plywood underneath the hole to the flooring, and cutting that section out with a 3/4" lip remaining on the 2"x12" boards. A hole is then drilled through the center of these covers for removal. Additionally, sections of e-track were attached to the sides, lining up with the foosball holes. This allows e-track ratchet straps to be used as guides when players strap in via d-rings to play human foosball on top of the floor.

Play: The three most common games played inside The Cage are foxhole foosball, human foosball, and small-sided soccer. No matter the game, we always use rhino skin foam balls for both safety and durability. Due to the ceiling needing to accommodate standing players, there is more vertical room than usual; as a result, we have used portable wood platform boxes underneath for those who are shorter. Individual game rules can be flexible based upon your needs or desires.



THE CAGE

